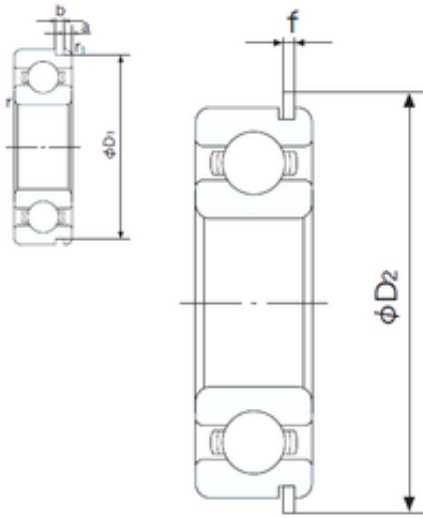




Wuxi NSB Transmission Technology Co.,...



63/28NR Bearing 2D drawings and 3D CAD models

28 mm x 68 mm x 18 mm NACHI 63/28NR
deep groove ball bearings

Bearing No. 63/28NR

Size	28x68x18 mm
Bore Diameter	28 mm
Outer Diameter	68 mm
Width	18 mm
d	28 mm
D	68 mm
B	18 mm
C	18 mm
a	3.28 mm
b	1.9 mm
f	1.7 mm
r min.	1.1 mm
r1 min.	0.5 mm
D1	64.82 mm
D2	74.6 mm
Weight	0.287 Kg
Basic dynamic load rating (C)	26,8 kN
Basic static load rating (C0)	14 kN
(Grease) Lubrication Speed	10000 r/min
Bore Type	Cylindrical Bore
Configuration	Single Row
Enclosure	Snap Ring Groove with Snap Ring
Bore Size	28 mm
Outside Diameter	68 mm



Wuxi NSB Transmission Technology Co.,...

Width	18 mm
Fillet Radius/Chamfer	1.1 mm
r1	0.5 mm
Snap Ring Width	1.7 mm
Snap Ring Outside Diameter	74.6 mm
D1 (max)	64.8 mm
a (max)	3.3 mm
b (min)	1.9 mm
Dynamic Load Rating	26,800 N
Static Load Rating	14,000 N
Limiting Speed - Grease	11,000 rpm
Limiting Speed - Oil	13,000 rpm
Factor fo	12.4
Radial Clearance	0.005 to 0.020 mm
da (min)	35 mm
Da (max)	61 mm
Dx (min)	76 mm
ra (max)	1 mm
Cy (max)	4.6 mm