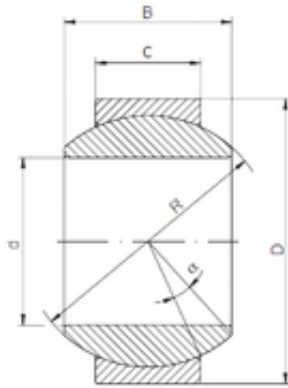




# Wuxi NSB Transmission Technology Co.,...

160 mm x 260 mm x 135 mm ISO GE 160  
HS-2RS plain bearings



Bearing No. GE 160 HS-2RS

Size	160x260x135 mm
Bore Diameter	160 mm
Outer Diameter	260 mm
Width	135 mm
d	160 mm
D	260 mm
B	135 mm
C	80 mm
R	225 mm
Angle	16 °

GE 160 HS-2RS Bearing 2D drawings and 3D CAD models